

● ● ● | **LSES RESOURCES**

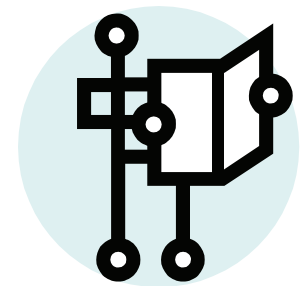
e-Libraries

Table of Contents

- **Subscriber Search Guide**
- **List of Resources Categories**
- **Privileges**
- **Join as a member**
- **Subscription Registration/ Renewal**

Last Updated:

1st January 2007





To find out more, [please register](#).

Subscriber Search Guide

The LSES has two sections of resources, namely e-Libraries and e-Helper.

To access the LSES resources, members must log-in to use the service.

Under the e-Libraries section, subscribers may search using:

- ✦ Keywords, or
- ✦ Typing a particular name of category, or
- ✦ Typing an article reference code that ends with “EL01”.

For example:

If a subscriber wishes to find a particular article, he/she would type in the article reference code which is indicated beside the article title, e.g. SE10EL01.



Learning Sparks Educational Services

Mailing Address
PO Box 120
Choa Chu Kang Central Post Office
Singapore 916834
For more details: admin@lsesnet.com



To find out more, [please register](#).

Subscription Registration

Mode of Registration

Submit your registration on-line through the [website](#). Proceed to register and select from the subscription options. You will receive an e-mail confirmation of your account with us and also an on-line payment details. When payment is received, the LSES will inform you of your account activation. Your subscription will be valid for one year with immediate effect upon activation to the date of expiry.

Subscription Renewal

Subscribers who wish to continue or renew their subscription to the LSES Resources can log-in using their User e-mail and password to re-select their subscription options after the date of expiry.



Learning Sparks Educational Services

List of LSES Resource

By Categories under the e-Libraries:

ReadingStudies

Language&Literacy

Mathematics&Numeracy

SpecialEducation

MontessoriStudies

ChildrenServices

ParentEducation



To find out more, [please register](#).



Learning Sparks Educational Services

Privileges



Access for students of LSES

Students who enroll in any of the Training Programs under the LSES Institutes will be entitled to access the LSES Resources free of charge.

On confirmation of program enrolment and receipt of program fee, the student must register an account with LSES. Please indicate in the instruction box the titles of the programs.

Students can only access to the e-Libraries for resources needed in the course of their studies from the starting date until the completing date of the respective training programs.

Join as a member

You can become a member by subscribing to the LSES Resources at a nominal annual fee which allow you to have continual access.

- ✦ One year @ SGD45.00 for e-Libraries
- ✦ One year @ SGD25.00 per level from choices of 10 levels for e-Helper
- As a subscriber to e-helper, you will have access to numerous printable worksheets or wide range of materials for teachers and parents to use with their pre-schoolers and school-age children. These resources are based on Ministry of Education, Singapore guidelines and syllabuses. Besides, we also include the best and extensive resource library of sites which are identified by us as being useful for parents and teachers.
- As a subscriber to e-Libraries, you will have access to a wide range of conveniently and organized databases. The LSES Resources provide its subscriber with an extensive resources library of sites and topics that have been identified by us as being the most relevant issues faced by course trainees or anyone who wants to find out more. about a specific topic



➤ [Register now !](#)